



# Wheelabrator Gear Peening System

Wheelabrator® Automated Airblast Systems have been designed specifically for exacting specifications called for in automotive industry applications. Using precision, multiple-axis nozzle manipulation and part movement, Wheelabrator systems allow for flexibility and repeatability topeen power transmission components. Systems also provide seamless integration with standard robots for machine tending. Unlike other complex CNC based control systems, Wheelabrator controls and operator interfaces allow the system operator to create techniques and program process parameters with great ease.

The Wheelabrator Gear Peening System is ideally suited for peening transmission components such as pinion gears and ring gears. Quite simply an effective means to repeatable peening results.

- Applications
- Pinion Gears
  - Ring Gears
  - Combinations

- Specifications
- MIL
  - OEM (DaimlerChrysler, GM etc.)



## Features:

- Robotic load/unload arrangement provides a fully automatic cell
- Sturdy, thick mild steel blast cabinet for reduced maintenance and long life
- Sound insulation and rubber lining in the cabinet interior for reduced operational noise levels
- Aircraft door style inflatable seal reduces source noise and prevents media leakage
- Large access doors for maintenance access
- System adaptability for different media types (shot, cut wire etc.) to address changing process needs
- Process Control - media size classification, flow rate, peening pressure for consistent peening results
- Single and multiple axis nozzle manipulation to direct media stream at specific part locations
- Variety of Infeed and Outfeed part handling arrangements
- Integral Ventilation and Dust Collection
- Test fixtures and factory process prove-out prior to shipment

## Controls:

- User-friendly Touchscreen interface to access and alter all system parameters
- Optional PC-based interface allows greater storage and reporting capabilities
- Operator capability to program and store techniques using simple controls
- Closed-loop feedback and process controls for repeatable and consistent peening results
- Detailed diagnostics to assist in troubleshooting

## Options:

- Manual load/unload option where robotic cell is not desired
- Dual size media capability
- Multi-axes nozzle manipulators
- Infeed Conveyors
- Outfeed Conveyors - indexing table, unload pallets etc.
- Indexing conveyors to process parts with long blast cycles

## Utility Requirements:

- Each 3/8" nozzle consumes 160 CFM of air at 80 PSI. Total compressed air requirement may vary depending on blast pressure and nozzle size
- Connected load: 15-20 HP (base). Additional load requirements will depend on options selected.
- Approximate space requirements: 10' x 14' x 20' high above floor level (excluding robot and infeed/outfeed)

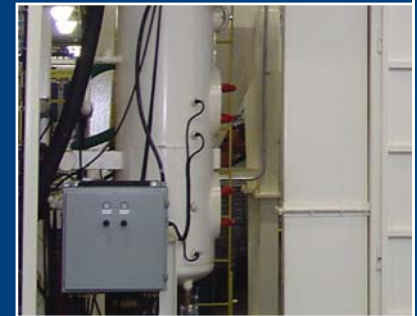
# technical specifications



Infeed Conveyor presents parts to robot



Table to accept peened parts



Media Size Classifier & Blast Tank



For more information please contact

Wheelabrator Equipment Sales  
1219 Corporate Drive  
Burlington, Ontario L7L 5V5 • Canada  
(800) 845-8508 • (905) 319-7930  
Fax: (905) 319-7561

Wheelabrator Parts, EMP and Service  
1606 Executive Drive  
LaGrange, GA 30240  
(800) 544-4144 • (706) 884-6884  
Fax: (706) 884-0568

info@wheelabratorgroup.com